



mySidewalk // Affordable Housing & Redevelopment

New Partners for Smart Growth 2017 - St. Louis

February 3, 2017

Anchorage, Alaska

Goal: Gather public input and prioritize community needs.





Annotations

< Back to all annotations

4 Natural Areas

Tikishla Park is largely undeveloped consisting of the Middle and South Forks of Chester Creek, Class A wetlands and wildlife habitat. There are seasonal and year-round trails located throughout the parks natural areas.



Are there any issues or concerns that you would like to see addressed?

Your Response

Tell us what improvements, if any, you would like to see in the natural areas of the park? If so, please identify where?

Your Response



“I built this map as a tool for ***gathering public input***. We are working on a master plan for the park and through this process have identified 4 use areas. Each use area tends to draw different users to the park.”
– Stephen Rafuse, Parks Planner





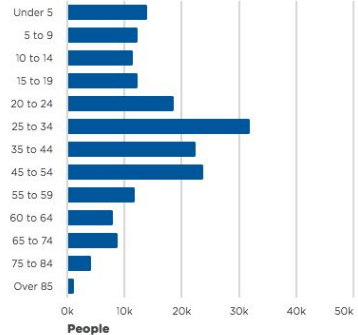
Charts

Content



Age Totals

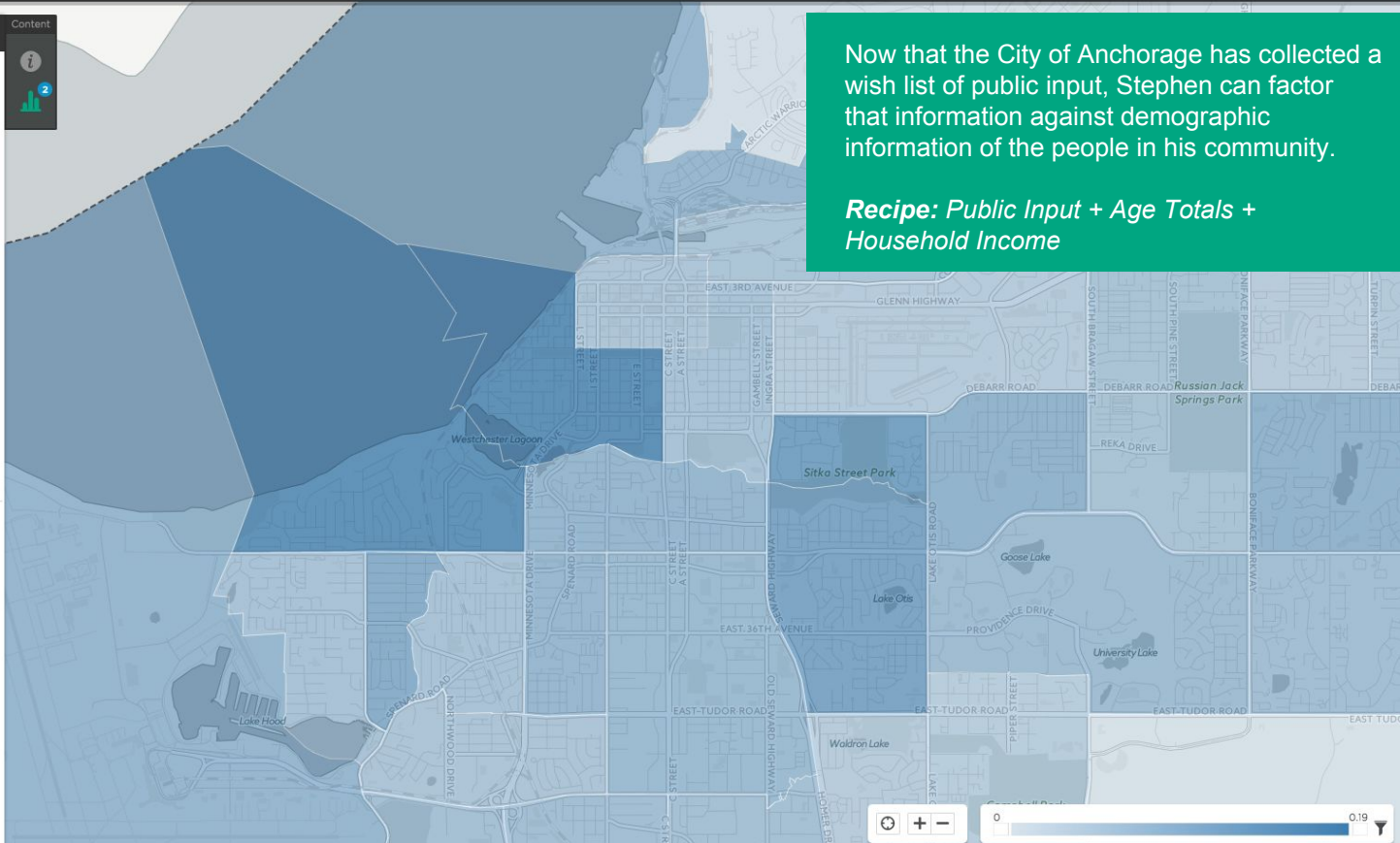
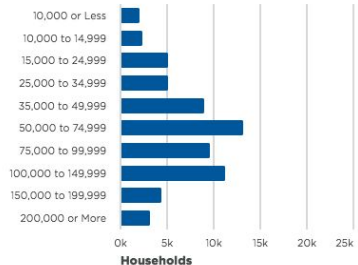
Census Tracts Visible Within Anchorage municipality



Source

Household Income

Census Tracts Visible Within Anchorage municipality



Now that the City of Anchorage has collected a wish list of public input, Stephen can factor that information against demographic information of the people in his community.

Recipe: Public Input + Age Totals + Household Income



Which site should the city council select and how can data help?

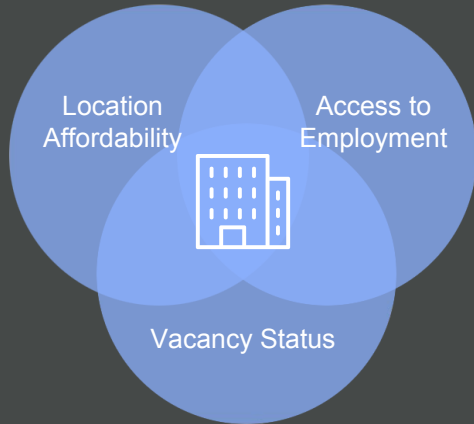
Are there alternatives that would address the challenge of site selection?

How do we communicate the results of the regional planning process to stakeholders?

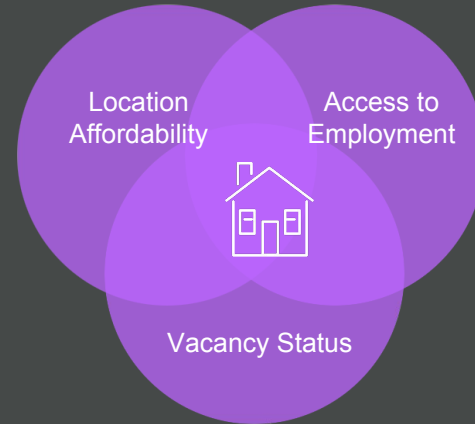


Identify Potential Sites for Affordable Housing

Site #1—Downtown Opportunity Areas:
Unaffordable areas with high access to employment



Site #2—Suburban Opportunity Areas:
Unaffordable areas with high access to employment



St. Louis, MO: Location Affordability for a Low Income Resident

Charts

Vacancy Status

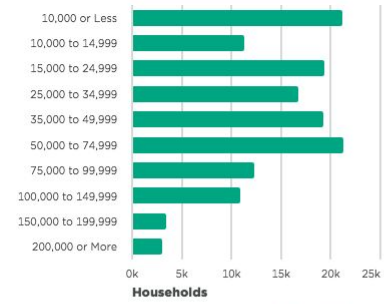
Census Tracts Visible Within St. Louis



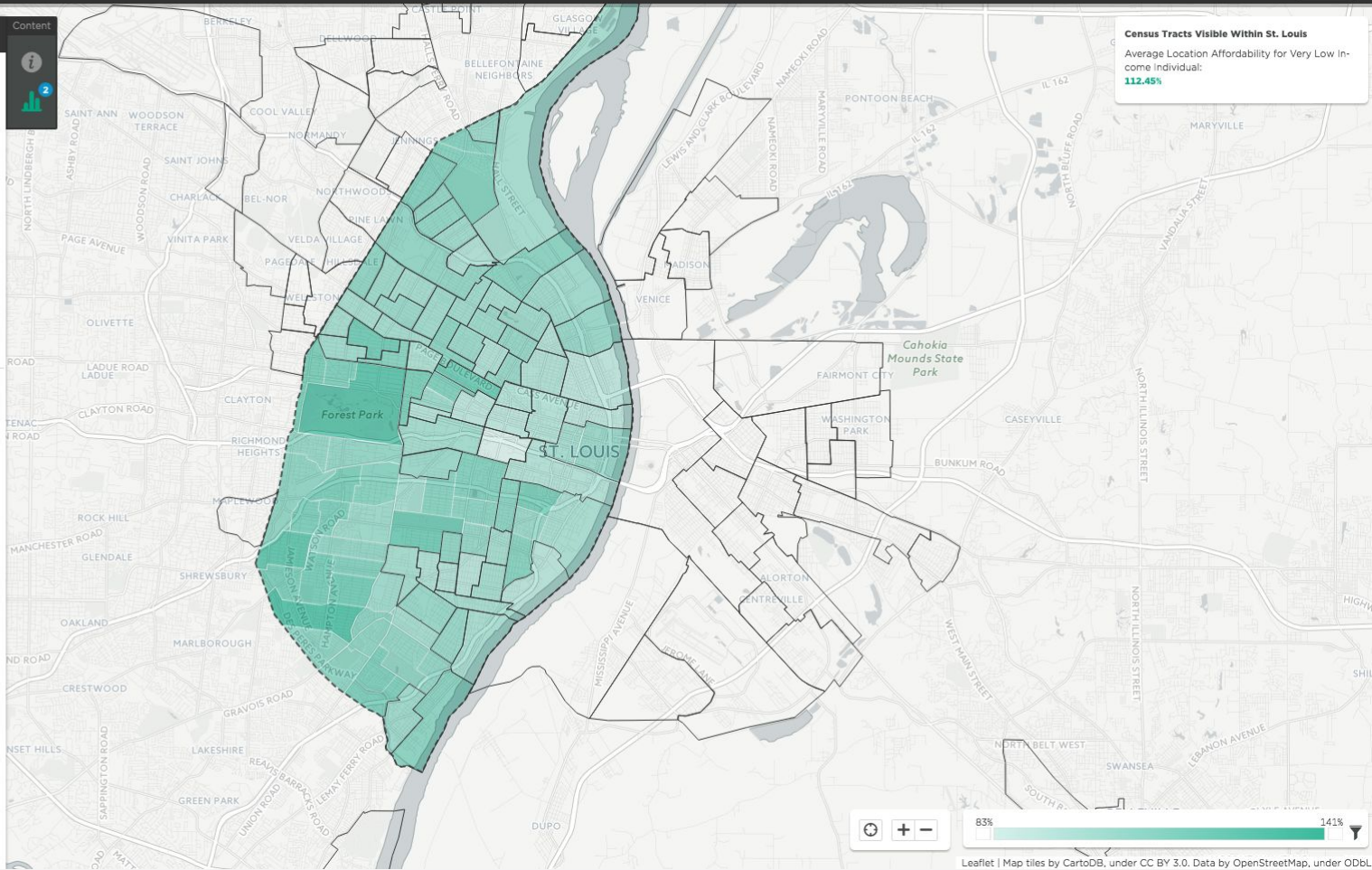
Dataset Source

Household Income

Census Tracts Visible Within St. Louis



Dataset Source



St. Louis, MO: Access to Employment

Charts

Vacancy Status

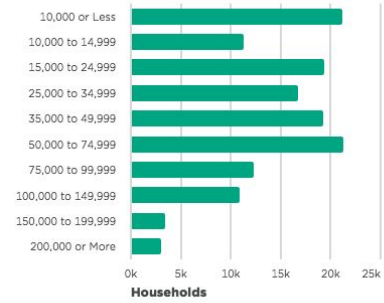
Census Tracts Visible Within St. Louis



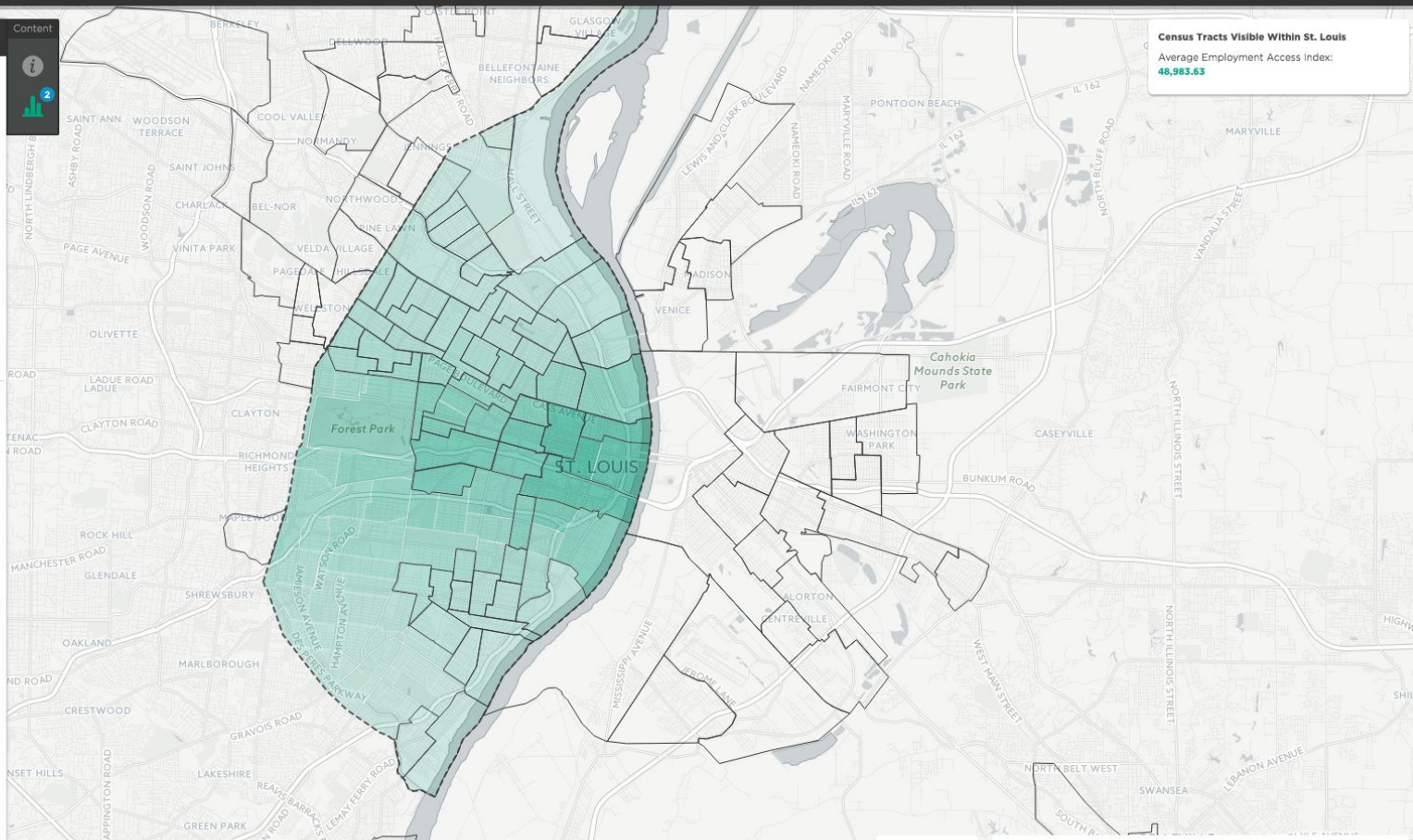
Dataset Source

Household Income

Census Tracts Visible Within St. Louis



Dataset Source



Census Tracts Visible Within St. Louis
Average Employment Access Index:
48,985.63

St. Louis, MO: Low Location Affordability & High Access to Employment

Charts

Vacancy Status

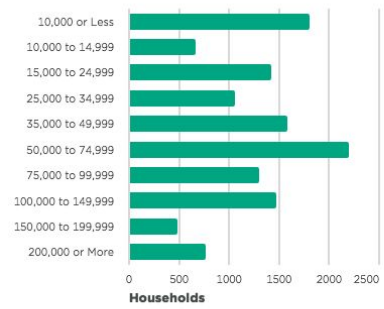
Census Tracts Visible Within St. Louis



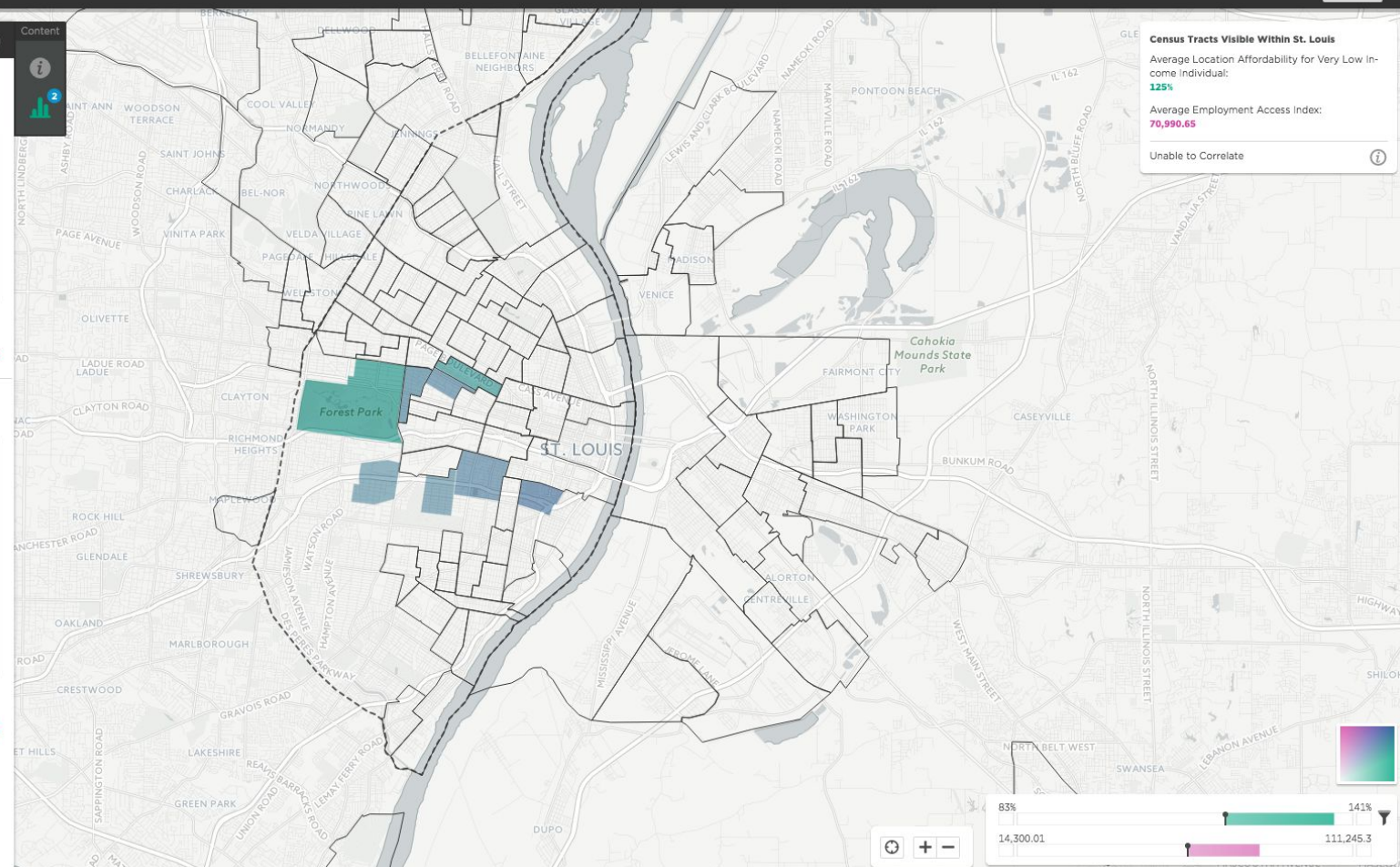
Dataset Source

Household Income

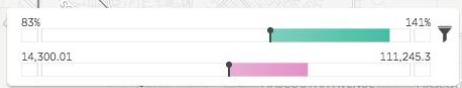
Census Tracts Visible Within St. Louis



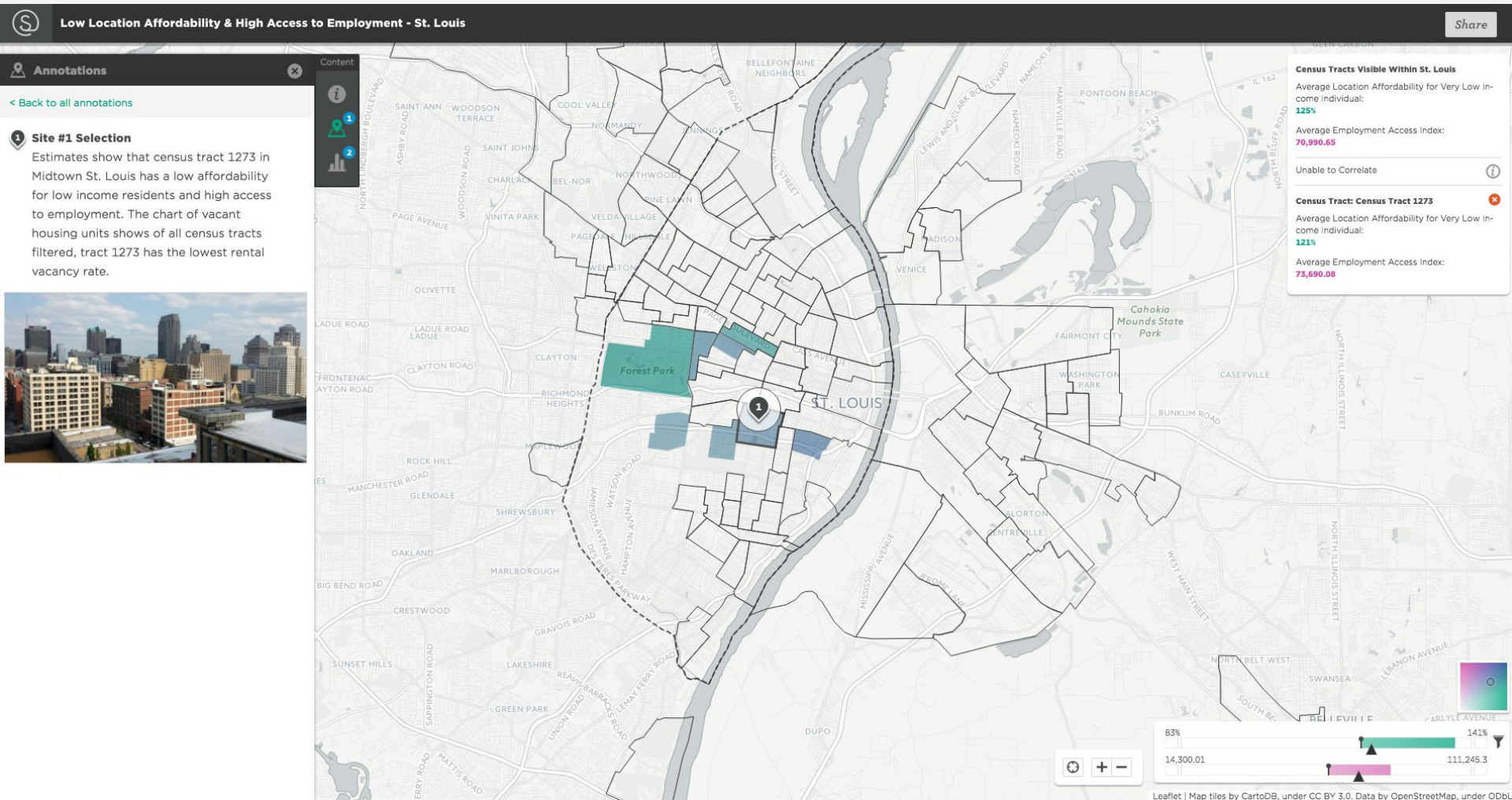
Dataset Source



Census Tracts Visible Within St. Louis
Average Location Affordability for Very Low Income Individual:
12%
Average Employment Access Index:
70,990.65
Unable to Correlate



St. Louis, MO: Low Location Affordability & High Access to Employment



St. Louis, MO MSA: Highly Cost Burdened Renters (Rent >50% of Income)



Highly Leveraged Renters: St. Louis, MO

Share

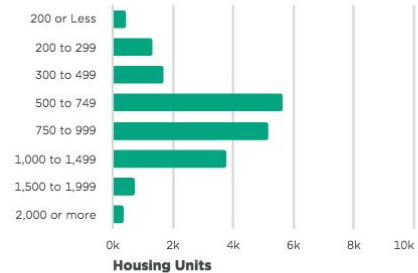
Charts

Content

2

Monthly Home Rent

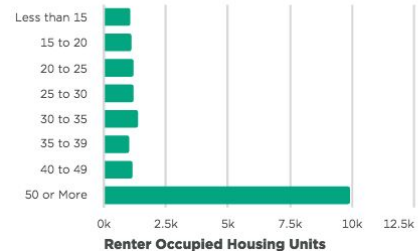
Census Block Groups That Are Visible



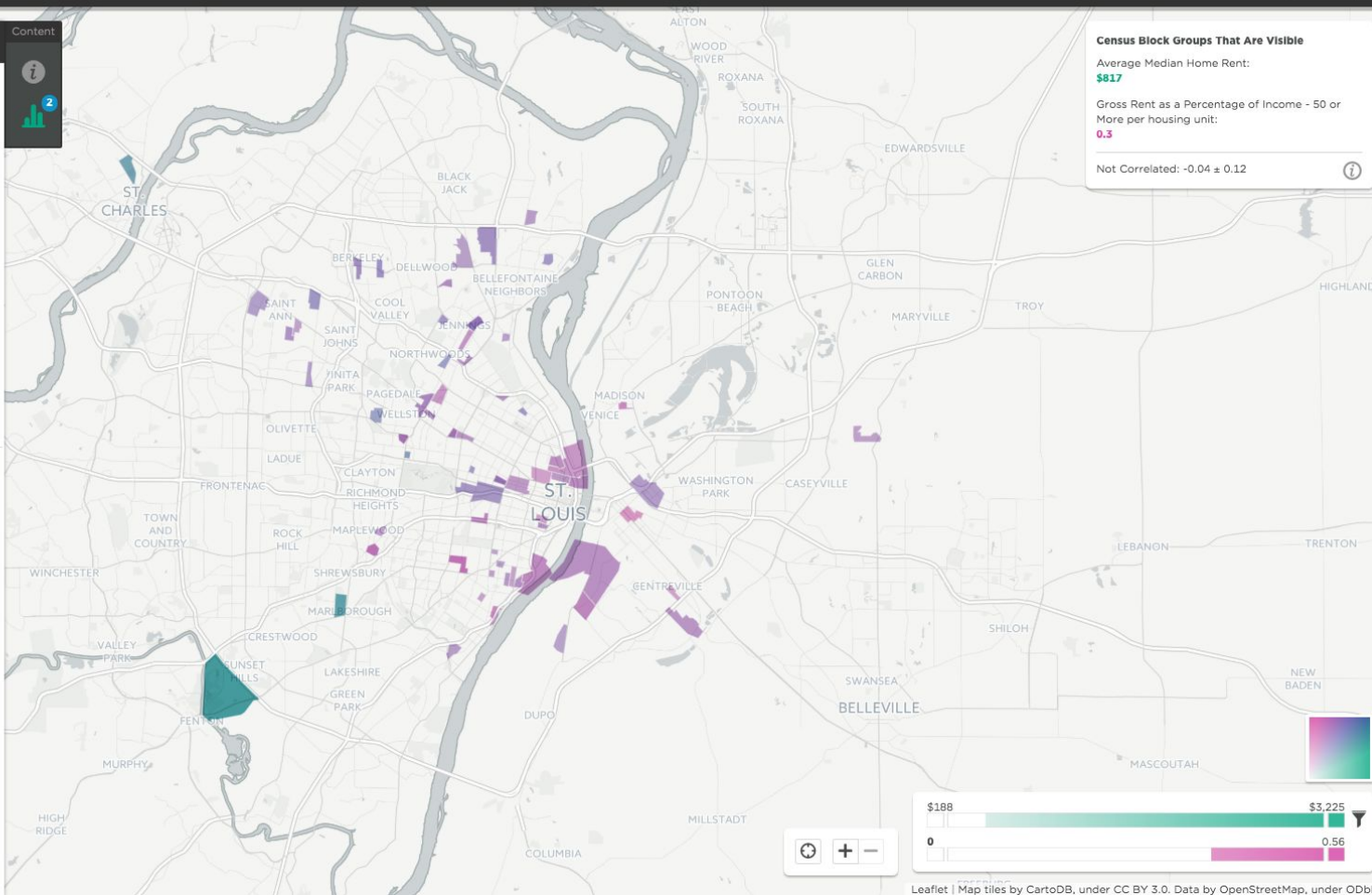
Dataset Source

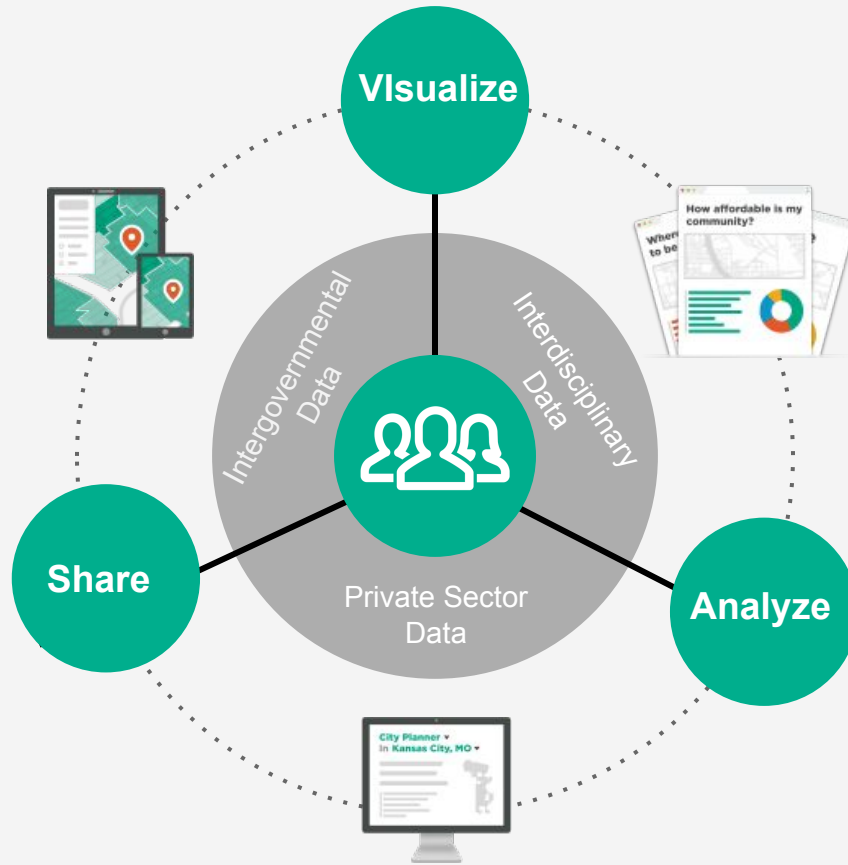
Gross Rent as a Percentage of Income

Census Block Groups That Are Visible



Dataset Source





Engage stakeholders with tools that make it easy to gather ideas and feedback.

Email me if you want a map:

hello@mysidewalk.com

